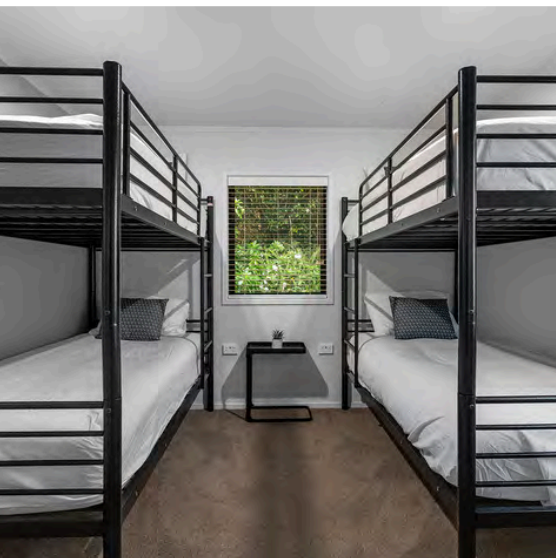




WAIHI BEACH SCHOOL CAMP PROGRAM





CONTENTS

Welcome	3
2-night package	4
1 Night package	5
Day visit excursion: Gold mine Brashier / Gold mine pit walk + Waihi Museum.	6
Build your own experience: Field study	7
Build your own experience: Team Building	8
Example program 2-night camp	9
Example program 1 night camp	11
Testimonials	12
Terms and Conditions	13

CONTACT US

15 Beach Road Waihi Beach, 3611 New Zealand

Phone: 07 863 5504

Email: waihibeach@tasmanholidayparks.com

Website: tasmanholidayparks.com/nz/waihi-beach/



WELCOME

It all starts here...

Welcome to Tasman Holiday Parks - Waihi Beach, one of New Zealand's oldest holiday parks, opening in 1899.

Waihi Beach Holiday Park is situated amongst five acres of beautiful native bush and manicured gardens that run down to the beachfront. Mature Pohutukawa trees provide a natural shade canopy and attract an abundance of birdlife. Our professional, friendly staff are committed to helping make your stay at the resort totally enjoyable and are always on hand to help you with anything you may need.

The resort's vibrant history stretches back to the late 1800's when miners working at Waihi lived in tents and shanties on the site that would eventually become Waihi Beach Holiday Park. When visiting, be sure to read up on the resort's interesting and colorful past.

Located two hours south of Auckland down the east coast, lies picturesque Waihi Beach, one of New Zealand's safest and most pristine beaches. Whether you're local or from out of town, a holiday for a weekend or longer term will be enjoyed by all. Tasman Holiday Parks Waihi Beach provides the ideal place to enjoy this fabulous part of the country.



1 NIGHT CAMP PACKAGE

The pricing below is based on an off peak – mid -week, two-night camp for a minimum of 30 students, 3 staff.

Accommodation:

Option 1: Kitchen Cabin: Sleep 4 or 5 pax. Not self-contained.

Option 2: Ensuite Unit studio: Sleep 3pax. Self-contained.

Option 3: Self-contained unit (8): Sleeps 6pax. Self-contained.

Option 4: Camping/Tenting: 5 people per site. Tent/camping gear not included.

Please note that these options will be subject to availability and most likely to be combined depending on the size of the group.



2 NIGHT CAMP PACKAGE

The pricing below is based on an off peak – mid -week, two-night camp for a minimum of 30 students, 3 staff.

Accommodation:

Option 1: Kitchen Cabin: Sleep 4 pax. Not self –contained.

Option 2: Ensuite Unit studio: Sleep 3pax. Self-contained.

Option 3: Self-contained unit (8): Sleeps 6pax. Self – contained.

Option 4: Camping/Tenting: 5 people per site. Tent and camping gear not included

Please note that these options will be subject to availability and most likely to be combined depending on the size of the group.

**** Other options available subject to availability ****



DAY VISIT EXCURSION: GOLD DISCOVERY CENTRE

(Only suitable for children over 15yo)

A day-long fun tour re-tracing the historic gold trails in Waihi and the stunning Karangagake Gorge.

YOUR PACKAGE INCLUDES

- Waihi Gold Experience entry
- Goldfields Heritage Railway Trip
- Bike hire to cycle the Hauraki Rail Trail

INCLUDED WITH YOUR TICKET

- Waihi Gold Experience entry.
- Bike hire, helmet and trail guide.
- Free coffee voucher.
- Goldfields Railway ticket.

Adults: \$99 and Children U/15: \$69

Excursions start and end at the Gold Discovery Centre / I-Site (126 Seddon St, Waihi).



DAY VISIT EXCURSION: MINE PIT WALK + WAIHI MUSEUM

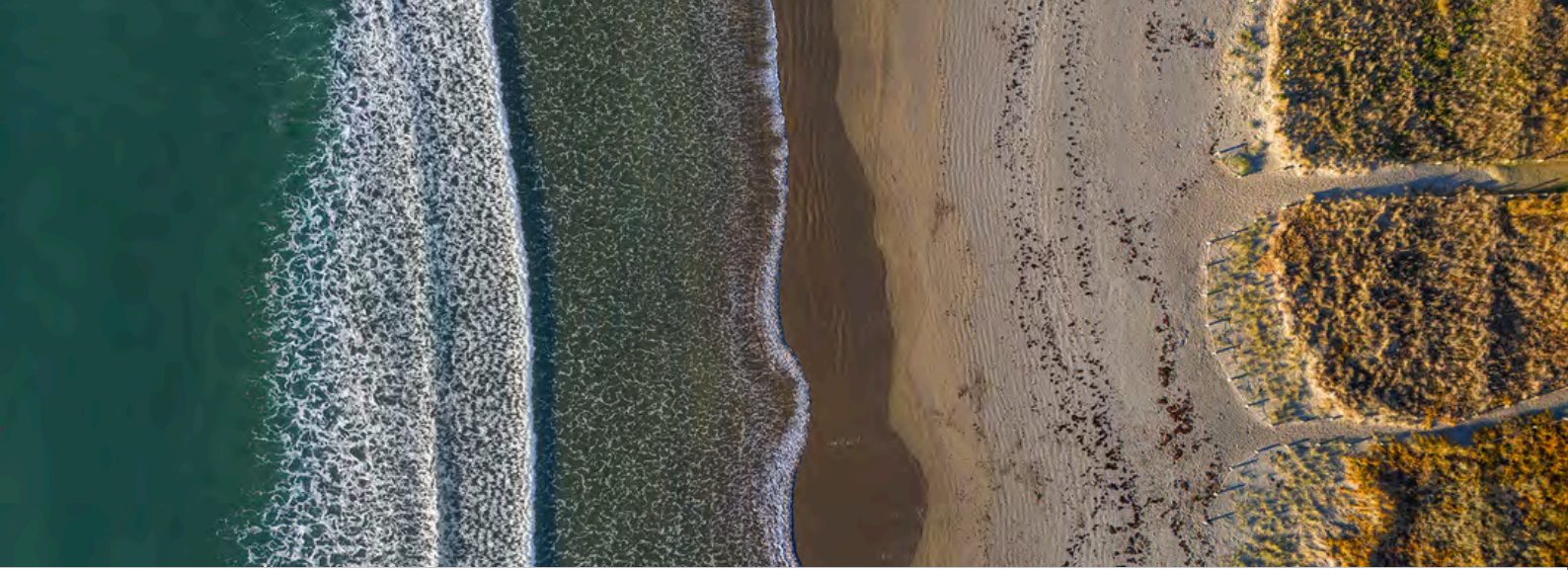
(Suitable for younger children / budget friendly).

The mine pit walk is a great – easy way to have a look at the dimensions of the current and operative gold mine in Waihi. Easy for younger children, as it is a flat 1 hour walk in total if you decide to do the whole loop around the mine site.

Finish the walk with a picnic in the mine pit area or if you wish, the Gilmour reserve is not too far from it and it presents beautiful scenery with a lake and picnic tables available.

After lunch, make sure you visit the Waihi arts Center and museum before it closes at 3:00pm. This museum presents the history of the gold mining era 1880 – 1950's in the Karangahake and Waihi areas.

Finish your day with a swim in our heated pool to relax after a big day of exploring!



BUILD YOUR OWN EXPERIENCE: FIELD STUDY

Waihi Beach is an ideal living classroom and mindfulness setting due to the presence of easily accessible coastal ecosystems: Rock platforms, beach stretch, sand dune and forest nearby.

With easy access to these ecosystems, Waihi Beach offers a great opportunity to explore and learn about their characteristics and biodiversity.

Introductory ecology walks – Scavenger hunt:

General Ecology Walk to discover basic principles of ecology – the study of living spaces, living places, and living species.

Tasman Holiday Parks Waihi Beach has curated two different Scavenger sheets (One for a beach walk and another for Bush/forest walk) for the ones keen to explore what surrounds our beautiful park and who live on the different ecosystems.

This idea has been created with the purpose of teaching the next generation as they play and adventure themselves finding and recognizing native species that are incredibly important for Aotearoa biodiversity – this will include a selection of plants, trees and wildlife.

- Beach walk (easy) – 1hour
- Water reservoirs walk (easy) – 30min
- Trig walk (moderate / difficult) – 45min/1 hour – Make sure you bring cameras as once you reach the summit, the views from the lookout are incredible!
- Orokawa Bay (Easy – moderate) -45 minutes one way / 55 minutes the way back. 2hrs max in total. (PLEASE NOTE this walk is ONLY accessible during low tide so plan your day around this if a walk to the bay is on your bucket list for your time in Waihi Beach!)



BUILD YOUR OWN EXPERIENCE: TEAM BUILDING + WELLBEING

Wellbeing: Experience a guided journey through mindfulness. Wild and awake is about relaxing in the peace and vitality of nature where you'll enjoy quiet, reflective time. It's about gaining insight into us as well as the precious ecosystems that we depend upon. It's about learning techniques that can be applied in the sometimes-chaotic nature of everyday life.

Yoga class 45min with Manawa yoga. \$10.00 per person. Min of 5 people. Max 15 people per session (groups can be split into two or three sessions).

***Bookings need to be done at least 1 month before check in.

Beach games & Sandcastles: Enjoy a session of fun beach games and sandcastle building. Students will work in teams to collaborate and use their imagination to bring their vision to life. A great way to boost the fun and encourage teamwork within the group.

*** All equipment provided.

Orienteering: Our spin on traditional orienteering with a fun twist of amazing race vibe! This team building activity is a great way to promote teamwork as they get to know every single corner of our park.



EXAMPLE PROGRAM: 2-NIGHT CAMP

Day 1:

TIME	ACTIVITY	LOCATION
11:00 AM	Arrival at Tasman Holiday Parks – Site introduction +Park orientation activity	Main facilities area / park
12:30 PM	Lunch	Main Facilities Area
1:30 PM	Field activity: Trig or water reservoir walk +scavenger activity or Orokawa Bay if you are up for a challenge!	Trig walk or Water reservoir located at the back of the park
3:00 PM	Check-in Time	Reception to collect maps / keys
4:30 PM	Movie + popcorn afternoon or Pool time!	TV Room
6:30 PM	Dinner	Main Facilities Area

Day 2:

TIME	ACTIVITY	LOCATION
7:00 AM	Breakfast	Main facilities area / park
9:00 AM	Day visit excursion: Mine pit + Museum or Gold Discovery Center experience (group choice)	Waihi
12:30 PM	Lunch at Gilmour Lake reserve	Waihi
2:00 PM	Drive to ANZAC BAY from Waihi for quick walk – Great time to take pictures of the beautiful landscape	ANZAC Bay
3:30 PM	Build your own experience: Team building + Wellbeing. Yoga or Sandcastles/Beach games and sandcastles	THP Waihi Beach / Beach
6:30 PM	Dinner	Main Facilities



EXAMPLE PROGRAM: 2-NIGHT CAMP

Day 3:

TIME	ACTIVITY	LOCATION
7:00 AM	Breakfast	Main facilities area / park
9:00 AM	Pool	THP Waihi Beach pool
10:00 AM	Key drop-off	Reception



EXAMPLE PROGRAM: 1-NIGHT CAMP

Day 1:

TIME	ACTIVITY	LOCATION
11:00 AM	Arrival at Tasman Holiday Parks – Site introduction +Park orientation activity	Main facilities area / park
12:30 PM	Lunch	Main Facilities Area
1:30 PM	Field activity: Trig or water reservoir walk +scavenger activity or Orokawa Bay if you are up for a challenge!	Trig walk or Water reservoir located at the back of the park
3:00 PM	Check-in Time	Reception to collect maps / keys
4:30 PM	Movie + popcorn afternoon or Pool time!	TV Room
6:30 PM	Dinner	Main Facilities Area

Day 2:

TIME	ACTIVITY	LOCATION
7:00 AM	Breakfast	Main facilities area / park
9:00 AM	Day visit excursion: Mine pit + Museum or Gold Discovery Center experience (group choice)	Waihi
10:00 AM	Key drop off	Reception
11:00 AM	Build your own experience: Team building + Wellbeing. Yoga or Sandcastles/Beach games and sandcastles	THP Waihi Beach / Beach
12:00 PM	Lunch	Main Facilities
1:00 PM	Drive home	



TESTIMONIAL

“Tauranga Boys College have spent the last two years taking Year 10 students to Waihi Beach Tasman Holiday Park and both times have had an awesome experience.

Our students had an absolute blast exploring surroundings, engaging in exciting activities, and bonding in such a welcoming and safe environment. The ability to use the pool and BBQ area, along with having direct access to the beach has meant we are able to offer the perfect camp experience for our students.

The staff have gone above and beyond to ensure everything ran smoothly and have always offered help wherever needed. We will continue to use this facility moving forward as it has been an excellent experience for our students”.

- Tauranga Boys College