



tasman
HOLIDAY PARKS

HOLIDAY PARK GUIDE

Find your moment of **freedom**



www.tasmanholidayparks.com

Your moment of freedom awaits

Choose any Tasman Holiday Park across Australia and New Zealand and step into a timeless world where you can find the freedom to unwind and relax. With over 40 holiday parks in truly inspirational locations across Australia and New Zealand, there's a park to suit every need and holiday craving.

Tasman Holiday Parks offer timeless holiday experiences across Australia and New Zealand in places of vibrant natural beauty. From the rugged beauty of New Zealand's North and South Islands to the east coast of Tasmania, to stunning Victoria all the way up to the coastline of Western Australia. Explore the coastal blue waters of the New South Wales' coastline up to tropical North Queensland, Australia.



Over 40 holiday parks in truly inspirational locations across Australia and New Zealand.

Find your next adventure.



It's time to find the freedom you crave, with **Tasman Holiday Parks.**

The Tasman Holiday Parks Promise

Choose any Tasman Holiday Park across Australia and New Zealand and step into a timeless world where you can find the freedom to relax.



Inspired Locations

Stay at a Tasman Holiday Park and feel life slow down. Hear the water, wake to birds chirping, discover a new richness to life in the raw, natural beauty surrounding you. Let our timeless locations inspire you as you explore all that your holiday destination has to offer.



Safe, Clean & Friendly Places

You'll discover that every Tasman Holiday Park is safe, clean and friendly. These might be the basics, but they're not basic to us. So, it matters that you feel like a friend welcomed you to a clean and safe place that allows you to relax and unwind.



Fully Planned Holiday Parks

Your Tasman Holiday Park is planned with the convenience and ease to eat, play and stay in comfort. In a Tasman Holiday Park, your holiday is full of possibilities. Put your feet up and relax or get the sand in between your toes and explore. Holiday how you want, knowing that whatever you need is always within reach.



Beautiful Moments

We pride ourselves on creating and delivering places that are beautiful. So, you can experience beautiful moments that uplift you and your loved ones. Unwind watching the kids play. Enjoy the sunshine in greener, natural surroundings. We create beautiful holiday parks so you can have beautiful moments.

Contents

8 Discover Australia

10 New South Wales

- 12 Tasman Holiday Parks Ballina
- 13 Tasman Holiday Parks Nambucca Heads
- 14 Tasman Holiday Parks North Star
- 16 Tasman Holiday Parks Kioloa Beach
- 17 Tasman Holiday Parks Merimbula
- 18 Tasman Holiday Parks Racecourse Beach
- 20 Tasman Holiday Parks Merool on the Murray
- 21 Tasman Holiday Parks Lake Mulwala
- 22 Tasman Holiday Parks Moama on the Murray
- 24 Tasman Holiday Parks Myola
- 25 Tasman Holiday Parks Tathra Beach

26 Northern Migration

30 Queensland

- 32 Tasman Holiday Parks Airlie Beach
- 34 Tasman Holiday Parks Cairns Cool Waters
- 35 Tasman Holiday Parks Fisherman's Beach
- 36 Tasman Holiday Parks Fraser Coast
- 37 Tasman Holiday Parks Hervey Bay
- 38 Tasman Holiday Parks Rollingstone
- 39 Tasman Holiday Parks Rowes Bay
- 40 Tasman Holiday Parks South Mission Beach
- 41 Tasman Holiday Parks Torquay Palms

42 Victoria

44 Food & Wine Trail

- 46 Tasman Holiday Parks Bendigo
- 48 Tasman Holiday Parks Bright
- 49 Tasman Holiday Parks South Bright
- 50 Tasman Holiday Parks Geelong
- 51 Tasman Holiday Parks Warrnambool

52 Tasmania

- 54 Tasman Holiday Parks St Helens

56 Western Australia

58 Perth to Yallingup Road Trip

- 62 Tasman Holiday Parks Albany
- 64 Tasman Holiday Parks Denham Seaside
- 65 Tasman Holiday Parks Kalbarri
- 66 Tasman Holiday Parks Ledge Point
- 67 Tasman Holiday Parks Serpentine Falls
- 68 Tasman Holiday Parks Yallingup Beach
- 69 Tasman Holiday Parks Yallingup Caves

70 Discover New Zealand North Island

72 Road Trip from Auckland to Te Anau

- 76 Tasman Holiday Parks Beachaven
- 77 Tasman Holiday Parks Ohiwa Beach
- 78 Tasman Holiday Parks Papamoa Beach
- 80 Tasman Holiday Parks Miranda
- 81 Tasman Holiday Parks Rotorua
- 82 Tasman Holiday Parks Waihi Beach

84 Discover New Zealand South Island

- 86 Tasman Holiday Parks Christchurch
- 88 Tasman Holiday Parks Picton
- 89 Tasman Holiday Parks Te Anau

90 Pet Friendly Parks

91 In-Park Activities



Discover
AUSTRALIA

Australia offers travellers a wealth of unique experiences from sophisticated cities to rainforests, deserts, mountains and stunning coastlines like no other.

BEACH & RIVER

Enjoy outstanding stretches of coastal blue waters right at your doorstep at a Tasman Holiday Park. Across this sunburnt country, we invite you to explore stunning coastlines, mighty rivers, lakes, waterfalls and the purest, sandiest beaches.

WILDLIFE, WILD COUNTRY

At a Tasman Holiday Park, you'll never be far from great wildlife sanctuaries, national parks brimming with unique Australian animals, fishing charters and sea cruises for wildlife-spotting.

PREMIUM TUCKER

What holiday is complete without some premium tucker? Great news...Australian towns, villages and regions offer some of the best food and wine available. Sample top-of-the-range seafood, wines, gourmet dining, tasty local bakeries and some fantastic Australian coffee throughout your adventures.

Explore

NEW SOUTH WALES

New South Wales is a picture-perfect holiday haven. From world heritage-listed rainforests on the north coast to pristine beaches on the south coast through to the tranquil Hawkesbury River to the mighty Murray region.

With plenty of must-visit spots and hidden gems, New South Wales has it all.



BALLINA

📍 35 Skennars Head Road, Skennars Head, NSW, Australia
 📞 02 6687 7450
 ✉ ballina@tasmanholidayparks.com

Beautiful Ballina. A pleasure-seeker's paradise. If you want to kick back, soak up the sun and explore some of the most spectacular beaches on the New South Wales north coast, you've come to the right place.

Perched on the headland at glorious Skennars Head, our family-first holiday park offers the best of both worlds.

Relax in the tranquil surrounds of this natural haven, then head off to discover the attractions of world-famous Byron Bay located only 20 minutes away or explore the colourful coastal vibe of Ballina and Lennox Head just around the corner.

Be as connected or off the radar as you wish. With outstanding facilities for pleasure seekers of every age, including free WiFi, you won't be disappointed.

PARK FACILITIES



NAMBUCCA HEADS

📍 26 Swimming Creek Road, Nambucca Heads, NSW, Australia
 📞 02 6568 6120
 ✉ nambucca@tasmanholidayparks.com

The easiest access to more beaches than any other holiday park in Nambucca Heads.

Take a detour from the hustle and bustle of life. Relax as you discover the charms of Nambucca Heads. Situated halfway between Sydney and Brisbane, Tasman Holiday Parks – Nambucca Heads is the ideal place to unwind or catch up with family and friends. Nestled in hectares of beautiful state forest,

this nature lover's haven is the only holiday park with direct access to picturesque Nambucca Heads.

Explore bike trails and walking tracks. Go beachcombing, surfing or fishing. Hit the pool or waterslide, make friends at the kids' holiday program. Our accommodation options are available to suit every family and budget – There are pet-friendly option sites available too!

PARK FACILITIES





NORTH STAR

📍 1 Tweed Coast Road, Hastings Point, NSW, Australia

☎ 1800 645 790

✉ northstar@tasmanholidayparks.com

Holiday playground for kids, dream destination for adults.

If you're looking for a Hastings Point caravan park with the lot, you've found it!

Just thirty minutes south of Gold Coast Airport, and thirty minutes north of Byron Bay, our North Star holiday resort offers ten gorgeous hectares of sub-tropical gardens, swaying palms, beautiful pools and awesome play areas.

Say goodbye to mediocre. This multi-award winning resort on the spectacular Tweed Coast does everything with the wow factor!

Kids? No problem. Try the giant aqua park for size, complete with water slides, cannons and interactive play features. Not forgetting kids club, school holiday activities and the adventure playground.

Grownups? We've got you covered. Indulge in the serene setting of our adult-only Seascapes leisure centre, with massage, lap pool, gym, spa and sauna all on hand.

Love the great outdoors? Our Hastings Point caravan park, surrounded by lush National Park, is nestled between a pristine beach and sparkling tidal estuary.

Visit the licensed café, check out the onsite Marine Discovery Centre, kick back and relax while the kids wear themselves out.

PARK FACILITIES

-  Sammy's Adventure Lagoon
-  Outdoor Playground
-  Marine Environment Museum
-  Ripples Licensed Café
-  Seascapes Leisure Centre
-  Neptune's Castle Kids Club
-  WiFi
-  Function Room & Loft
-  Little Treasures Play Corner
-  Games Room
-  Free Tennis
-  Camp Kitchen
-  Convenience Store
-  Outdoor BBQ Area



📱 SCAN ME



KIOLOA BEACH

📍 635 Murramarang Road, Kioloa, NSW, Australia
 📞 02 4457 1072
 ✉️ kioloa@tasmanholidayparks.com

Connect with nature at Kioloa Beach. Relax and re-energise as you soak up the natural charm of this scenic destination. Tasman Holiday Parks – Kioloa Beach is on the south coast of New South Wales, about halfway between Batemans Bay and Ulladulla.

Our family-friendly park has direct access to Kioloa Beach, a favourite spot for swimming, surfing, paddleboarding and fishing. It's a short stroll to the coastal town of Kioloa, where you can sample delicious seafood at a café with stunning

coastal views, browse the shops or visit some local attractions.

Holiday in comfort at our Kioloa Beach holiday park – Dip in our 25-metre pool or step up the pace with a game of tennis on our full-sized, hard surfaced court. Kids can also slide, climb and swing for hours at our covered playground or get them splashing in our toddler pool with a shade sail for sun protection.

Try every experience and enjoy a leisurely stay at Tasman Holiday Parks – Kioloa Beach. Your peaceful holiday haven is waiting.

PARK FACILITIES



- Playground
- Swimming Pool & Toddler Pool
- Tennis Court
- BBQ
- Direct Beach Access
- Laundry
- Pet Friendly

MERIMBULA

📍 29 Sapphire Coast Drive, Merimbula, NSW
 📞 02 6495 1746
 ✉️ merimbula@tasmanholidayparks.com

Kick back in magical Merimbula.

Set in fourteen glorious acres of bushland, there's something for every member of the family to enjoy. Indulge, year-round, in our fully heated indoor pool and spa, while the kids play!

Close to the vibrant town centre and waterfront, our Merimbula holiday park is the perfect base to explore the delights of the far south coastline of NSW. With its unspoiled sandy beaches, ocean fishing, seasonal whale spotting and great dining options, this treasured holiday hub has it all.

PARK FACILITIES

- Jumping Pillow
- Heated Indoor Pool & Spa
- Pet Friendly
- Pedal Kart
- Giant Chess Set
- Fire Pit
- Beach Volleyball
- Games Room
- Mini Golf
- Dump Point
- Laundry
- Camp Kitchen
- Tennis Court
- BBQ





RACECOURSE BEACH

📍 381 Murramarang Road, Bawley Point, NSW, Australia

☎ 1800 659 545

✉ racecourse@tasmanholidayparks.com

Experience the real Australian beach holiday at Racecourse Beach.

Experience the real Australian beach holiday at Racecourse Beach.

Everyone's a winner at Racecourse Beach. Hugging one of the most glorious beaches in the Shoalhaven region, this popular Bawley Point holiday park delights every age group with a blend of natural beauty and outstanding family fun.

An easy drive from Sydney and Canberra, Racecourse Beach has it all – great activities for kids, sports for the energetic and delicious cuisine for the foodies.

Perfect for kids of all ages, our holiday park offers all the simple beachside fun that kids thrive on. Test your skills on the Holey Moley Mini Golf, have fun on the jumping pillow, slide into more water splashing fun with our waterslide or simply relax by the swimming pool. Everything's possible at Racecourse Beach – jewel of the NSW South Coast.

PARK FACILITIES



📱 SCAN ME



MEROOL ON THE MURRAY

📍 131 Merool Road, Moama, NSW, Australia
 📞 03 5480 9111
 ✉️ merool@tasmanholidayparks.com

LAKE MULWALA

📍 3327 Spring Drive, Mulwala, NSW, Australia
 📞 03 5744 1393
 ✉️ lakemulwala@tasmanholidayparks.com

Enjoy more waterfront than any other holiday park on the Murray River in Moama Echuca.

Merool on the Murray is a haven for families and water sports enthusiasts. Situated at Moama Echuca, our holiday park is two and a half hour's drive from Melbourne. Set on 25 hectares of land boasting 1.5 kilometres of majestic Murray River frontage, it gives you

easy access for swimming, fishing, boating and other water activities.

Our accommodation options are first class. You'll love our quaint Pioneer Themed Holiday Cabin Village, built to complement the original 1850s homestead. With friendly staff, excellent customer service and a relaxing environment, you'll be happy you visited!

The most facilities of any holiday park on the absolute waterfront of Lake Mulwala.

Discover the delights of this stunning water playground from Tasman Holiday Parks – Lake Mulwala. Located near the twin towns of Yarrawonga and Mulwala, north of the Murray River, our peaceful haven has absolute

lake frontage and is situated in natural bushland adjacent to Kyffins Reserve.

Get active with swimming, water sports, fishing and boating. Venture out to explore the region's history, food and wine, clubs and entertainment. Cruise on a paddle steamer, go for a stroll through nature, or simply relax by the pool – The choice is yours!

PARK FACILITIES



📱 SCAN ME

- Swimming Pool
- Jumping Pillow
- Giant Chess Set
- Camp Kitchen
- Playground
- Games Room
- Laundry
- BBQ
- Boat Ramp
- BBQ

PARK FACILITIES

- Laundry
- Playground
- Swimming Pool
- Tennis Court
- Boat Ramp
- Pier for Fishing
- BBQ
- Fire Drum Hire Winter Only
- Pet Friendly
- Fishing
- Pedal Kart
- Jumping Pillow
- Camp Kitchen
- Basketball



📱 SCAN ME



MOAMA ON THE MURRAY

📍 69 Dungula Way, Moama, NSW, Australia
 📞 03 5480 3031
 ✉️ moama@tasmanholidayparks.com

A bushland paradise on the banks of the Murray River. Looking for an amazing holiday adventure? Moama on the Murray offers enticing options for everyone. Situated at Echuca Moama on Australia's longest river, Tasman Holiday Parks – Moama on the Murray is located just two and a half hours from Melbourne.

At Moama on the Murray, life revolves around the river. With an amazing 2.5 kilometres of river frontage, swimming, canoeing, paddle boarding, waterskiing and fishing are popular pastimes for guests.

From premium villas and units available at our holiday park, you'll be sure to find an accommodation type that suits your needs.

Whether you envision an intimate celebration or a grand soirée, Tasman Holiday Parks – Moama on the Murray caters to every wedding dream. Nestled within 80 acres of scenic bush and parkland, Tasman's Moama on the Murray offers an idyllic setting for your special day. Our versatile venue allows you to seamlessly transition from ceremony to photoshoot and reception, all within the same captivating location.

OUR VENUES

Nestled within 80 acres of scenic bush and parkland, Tasman's Moama on the Murray offers an idyllic setting for your special day. Our versatile venue allows you to seamlessly transition from ceremony to photoshoot and reception, all within the same captivating location. Whether you envision an intimate celebration or a grand soirée, Tasman Holiday Parks – Moama on the Murray caters to every wedding dream.

With a devoted functions and events coordinator at your service, your celebration is guaranteed to unfold seamlessly, meticulously planned to perfection.



PARK FACILITIES



📱 SCAN ME

-  2 x Swimming Pools
-  Pedal Kart
-  Tennis Court
-  BBQ
-  Basketball Court
-  Mini Golf
-  Function Facilities
-  Water Park
-  Indoor & Outdoor Playground



MYOLA

📍 123 Myola Road, Myola, NSW, Australia
 📞 02 4446 5534
 ✉️ myola@tasmanholidayparks.com

Experience the best of the bush and beach on the waters of Jervis Bay.

Myola is the best kept secret of the South Coast. Imagine snorkelling in crystal clear waters, strolling along pristine white beaches and admiring incredible sea creatures and native animals in the wild. Myola is the perfect base for exploring Jervis Bay, renowned for its aqua blue waters and some of the whitest sands in the world.

Tasman Holiday Parks – Myola is situated in the City of Shoalhaven, an easy drive from Sydney, Wollongong or Canberra. At our holiday park, you'll see nature at its best as you soak up the surrounds. Watch a breathtaking sunrise, lounge around the pool, go fishing or spend some family time at the beach, the choice is yours. Relax and enjoy the simple pleasures in life at stunning Myola – You deserve it!

TATHRA BEACH

📍 41 Andy Poole Drive, Tathra NSW, Australia
 📞 02 6494 1350
 ✉️ tathrabeach@tasmanholidayparks.com

Relaxation and adventure awaits at Tathra Beach.

Discover spectacular treasures of the Sapphire Coast of New South Wales. Tasman Holiday Parks – Tathra Beach is situated halfway between Sydney and Melbourne, and three hours from Canberra. It's the perfect place to break your interstate journey or meet friends and family.

Set in an inviting tropical garden, our family-friendly park is directly opposite Tathra Beach. Set in the heart of this charming coastal community, just a short stroll to shops, cafes, restaurants and clubs. Sample regional specialties, browse shops and markets and get to know the friendly locals.

You'll feel refreshed in no time at Tasman Holiday Parks – Tathra Beach.



PARK FACILITIES



PARK FACILITIES





NORTHERN MIGRATION

As you migrate north to escape the cold of winter, you'll discover many not-to-be-missed sights and activities along your journey. As you travel along the coast from Merimbula to Cairns, these places, sights and tours need to be at the top of your must-do list.

📍 MERIMBULA

The gem of the Sapphire Coast, make **Merimbula** your first stop along the way. Boasting unspoiled sandy beaches and prime ocean fishing, making it a paradise for beach lovers and anglers alike.

Seasonal whale spotting and stunning red rock formations add to its natural allure, while vast national parks and walking trails offer adventurers a chance to explore the rich beauty of the Australian bush.

📍 RACECOURSE BEACH

The allure of **Racecourse Beach** extends beyond its stunning shoreline. Perfectly positioned for you to have beautiful moments swimming, surfing, snorkelling, fishing, bushwalking. Or enjoy the wildlife, wineries, craft villages, sensational dining and more

– take your pick! Our holiday park boasts a range of facilities catering to every age and interest. Dive into our resort-style swimming pool, complete with a thrilling waterslide for endless fun.



📍 NAMBUCCA HEADS

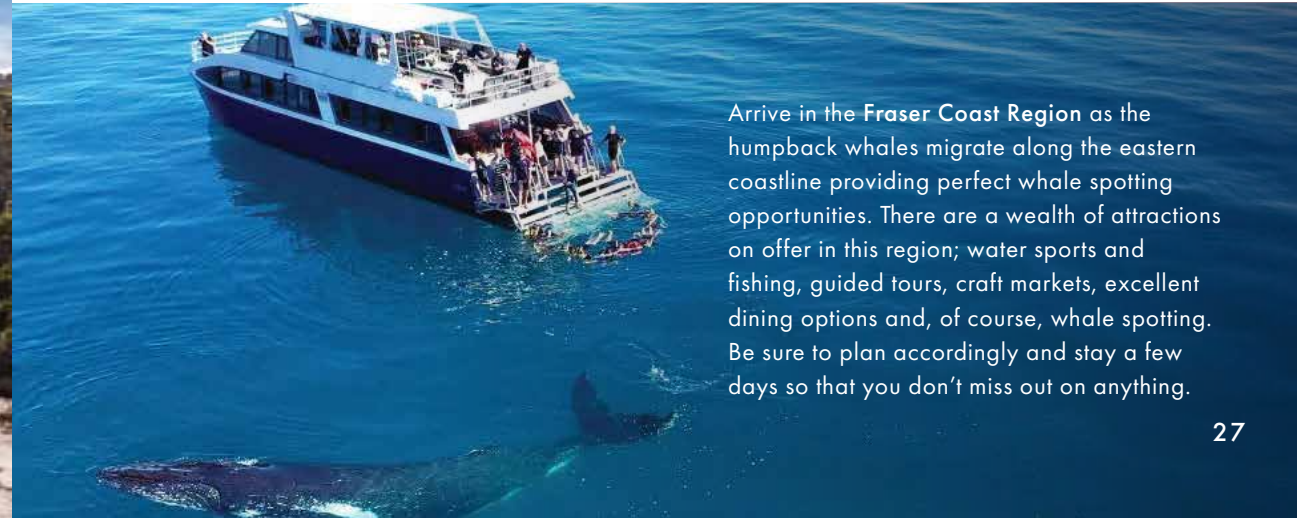
Take a break in **Nambucca Heads** to stretch your legs along the Nambucca Heads Boardwalk and leave your mark at the legendary V-Wall. Venture to the charming Bellingen and marvel at the spectacular waterfalls and world heritage-listed rainforests or get adventurous and kayak along the tranquil Bellingier River. After a day of exploration, park up and find everything you could want at your fingertips at Tasman Holiday Parks – Nambucca Heads. This beautiful park makes a comfortable home base for your holiday adventure. All the essentials are provided: high quality camp kitchens, amenity blocks, a laundry, kiosk and more. Stress-free and relaxation at its finest.

📍 BALLINA & HASTINGS POINT

Empty beaches, winding trails and a spectacular river. If this sounds appealing to you then you should book **Tasman Holiday Parks - Ballina** for your next stop. The epitome of a classic coastal holiday town, Ballina is home to some of the most pristine beauty a coastal town can offer. Visit the iconic Byron Bay, go exploring on a horseback trail ride in a host of beach and hinterland settings or take to the air and check out the stunning area on a helicopter tour. 30 minutes north of Byron Bay features the stunning coastal town of Hastings Point. Stay at **Tasman Holiday Parks – North Star** where you can enjoy hectares of sub-tropical gardens, swaying palms, with plenty of in-park amenities and activities on offer.



Arrive in the **Fraser Coast Region** as the humpback whales migrate along the eastern coastline providing perfect whale spotting opportunities. There are a wealth of attractions on offer in this region; water sports and fishing, guided tours, craft markets, excellent dining options and, of course, whale spotting. Be sure to plan accordingly and stay a few days so that you don't miss out on anything.





AIRLIE BEACH

Time to get tropical in Airlie Beach! Create beautiful moments exploring the tropical coastline, beaches or getting out to the Great Barrier Reef. Voted '2021 Best Beach in the World' by TripAdvisor, Whitehaven Beach is surely a must-do in the Whitsundays. As the tide shifts, get a good view of its magnificent swirling sands from the Hill Inlet Lookout. After a day of exploring and sightseeing, head back to base at Tasman Holiday Parks – Airlie Beach where you'll have everything you need to relax, unwind, and cook up a storm for dinner.



TOWNSVILLE

Continue your journey to Townsville where true adventure awaits. Discover the treasures of the deep with amazing underwater sculptures at The Museum of Underwater Art. If you prefer to explore the ocean from dry land, then visit Reef HQ where the world's largest living coral reef aquarium is your window to the Great Barrier Reef! Enjoy an intimate view of fish, sharks, corals and plants that call the reef home. Stay mere minutes from the heart of Townsville at Tasman Holiday Parks – Rowes Bay and experience true country-style hospitality.

If you prefer to continue north, then settle in at Tasman Holiday Parks – Rollingstone where you can expect comfort, cleanliness and convenience. You'll find everything you need on site: a well-equipped kitchen, free WiFi, a coin laundry and a convenience store selling the essentials. Feel like you're in heaven on earth as you kick your feet up and relax around the 30 metre natural pool, fringed by loungers and palm trees. You may never want to leave!



SOUTH MISSION BEACH

Nature lovers are in for a treat as you arrive at the tropical oasis, better known as South Mission Beach. Dive right into beautiful tropical waters and swim under the coconut palm trees that stretch along the shore. Get your nature fix with the multitude of wildlife tours, nature walks, and waterfalls and then wander to the surrounding villages that offer a fantastic array of dining and shopping options. Stay a while as you settle in at **Tasman Holiday Parks – South Mission Beach**. Bask in holiday bliss with a glass of wine in hand as you enjoy beachfront views at the on-site Beachcomber Coconut Café. Sounds like the perfect end to any big day of travel and tours.



You have at your destination, and what a destination to end your travels at! Cradled by rainforest and mountains, Cairns is a naturally beautiful choice for all couples seeking the best that Far North Queensland has to offer. As the cream of the Far North Queensland attractions crop, Cairns has so much to offer any keen traveller. Fitzroy Island, Daintree National Park, Cairns Esplanade and the Australian Butterfly Sanctuary, to name a few, are top local attractions awaiting your arrival.

CAIRNS

As you explore tropical North Queensland, **Tasman's Cairns Cool Waters** holiday park is the ideal place to relax and unwind. Boasting top notch camp kitchens, BBQ areas, a swimming pool, spa and even a turtle sanctuary right on your doorstep, everything is in place to optimise your holiday enjoyment.

So, park up, kick back and relax as you experience moments of freedom and absolute holiday bliss.

Explore

QUEENSLAND

Queensland...a tropical paradise! From the World Heritage-listed Great Barrier Reef and Daintree Rainforest to laidback towns and stunning beaches, Queensland is waiting for you to explore.

Calling ocean adventurers...dive and snorkel the Great Barrier Reef, sail the Whitsundays in a tail ship or schooner, swim in azure waters, fish off palm-fringed beaches, or jet ski around Magnetic Island.

Prefer to walk on the wild side? Nature is all around you in Queensland. Go platypus-spotting in Cairns, marvel at cassowaries in the Daintree Rainforest, watch for dingoes on K'Gari (Fraser Island) and swim with fish and turtles in waterfall-led rock pools. Take in the migration of the majestic humpbacks at Hervey Bay.



AIRLIE BEACH

📍 1 Jubilee Pocket Road, Airlie Beach, QLD, Australia

📞 07 4860 1700

✉ airliebeach@tasmanholidayparks.com

Holiday in the heart of Airlie Beach – the gateway to the Whitsunday Islands.

Set on the incomparable Airlie Beach, our caravan park is the perfect place from which to explore the Whitsunday Islands and the Great Barrier Reef. Your holiday starts from the moment you pull up at the park, and take in the tropical surrounds, resort pool and colourful birdlife.

You're surrounded by natural delights at our Airlie Beach park but just minutes away from supermarkets, cafes, bars and restaurants.

Settle into a luxury glamping tent, villa, rent a cabin or motel unit, park the van or pitch a tent. Pet-friendly sites are also available.

PARK FACILITIES

- 
Swimming Pool
- 
Playground
- 
BBQ
- 
Bird Feeding
- 
Pedal Kart
- 
Pet Friendly
- 
Camp Kitchen
- 
Laundry



📱 SCAN ME



CAIRNS COOL WATERS

📍 2 Shale Street, Brimsmead, QLD, Australia
 📞 07 4034 1949
 ✉️ cairns@tasmanholidayparks.com

Cool waters. Warm welcome. Tropical escape. Cradled by rainforest and mountains, our Cool Waters holiday park is a naturally beautiful choice for families and couples seeking the best that Far North Queensland has to offer. Located only seven kilometres to the centre of Cairns, our holiday park is perfectly positioned

with all the convenience of the city with none of the stress. Swim in our gorgeous pool, bathe in the spa, spot for turtles and platypus in our sparkling freshwater creek...either way, this is the perfect place for you to kick back and relax.

FISHERMAN'S BEACH

📍 67 Pattison Street, Emu Park, QLD, Australia
 📞 07 4939 6202
 ✉️ fishermansbeach@tasmanholidayparks.com

Another day in paradise at Emu Park. Forget sleeping in! With direct beach access to Fisherman's Beach and walking distance to Emu Park town centre, our park is the perfect base to explore Emu Park, the Capricorn Coast and the stunning Keppel Bay Islands. Eager to explore wonders of the Great Barrier Reef and Capricorn Coast? Tasman Holiday Parks – Fisherman's Beach is the perfect place to launch your holiday adventure.

Our pet-friendly holiday park is situated right on Fisherman's Beach in picturesque Emu Park. From here, it's just a short stroll to browse shops, cafes, and restaurants of Emu Park town, just a 15-minute drive to Yeppoon, and 30 minute drive to Rockhampton. Take in the beauty of Keppel Bay Marina, and discover some of Keppel Bay's 18 islands, stunning unspoiled beaches, unique forests, caves and significant historical sites... so many treasures on your doorstep!



PARK FACILITIES

- Swimming Pool
- Playground
- BBQ
- Pet Friendly
- Camp Kitchen
- Laundry
- Turtle Sanctuary



PARK FACILITIES

- Direct Beach Access
- Camp Kitchen
- Laundry
- Free DVD & Board Games
- Pedal Karts
- Giant Chess Set
- Kiosk





FRASER COAST

📍 91 Exeter Street, Torquay, QLD, Australia
 📞 1800 336 288
 ✉️ frasercoast@tasmanholidayparks.com

Your gateway to the very best of K’Gari and Hervey Bay.

Enjoy the best of all worlds at our relaxed and welcoming holiday park, perched in the heartland of beautiful Hervey Bay.

Fraser Coast is Queensland’s hidden gem, and our holiday park truly shines. Look for whales in season or visit the world’s largest sand island. Laze by the pool or explore kilometres’ worth

of glorious coastline. If you’re looking for fantastic accommodation in Hervey Bay, look no further. Match it with outstanding facilities and you’re there!

Wander to the beach located just a kilometre away – or head to the centre of Torquay with its bustling shops and thriving nightlife. You choose – relaxation, recreation or action.

HERVEY BAY

📍 295 Boat Harbour Drive, Scarness QLD, Australia
 📞 07 4128 2762
 ✉️ herveybay@tasmanholidayparks.com

Get away to beautiful Hervey Bay!

Beauty surrounds you in our glorious Hervey Bay tourist park. It’s so enticing, you might never want to go home again.

Known as the whale watching capital of the world, Hervey Bay’s unspoilt coastline, quiet charm and natural beauty will leave you refreshed and re-energised.

Treat the family to a holiday immersed in adventure. With renowned K’Gari (Fraser Island) just a whisper away, you can experience the once-in-a-lifetime wonders of this UNESCO World Heritage site.

Marvel at the local aquarium, let the kids run free at the nearby waterpark, or simply make the most of our gorgeous and shady on-site swimming pool. Either way, we look forward to welcoming you to our wonderful holiday park.



PARK FACILITIES



PARK FACILITIES





ROLLINGSTONE

📍 367 Hencamp Creek Road, Rollingstone, QLD, Australia
 📞 1800 006 567
 ✉️ rollingstone@tasmanholidayparks.com

A beachfront tropical paradise at Rollingstone. With an absolute beach frontage overlooking Palm and Havana Islands, our 32-acre patch of paradise is a haven for those escaping the southern winter or wanting a break. Just 40 minutes' drive north of Townsville, it's a tranquil spot to hire a villa or cabin, park a van or pitch a tent and enjoy the best that northern Queensland has to offer.

You're surrounded by nature at our Rollingstone holiday park – fish straight off the beach or soak up the morning sunrises. If taking it easy is your style, our Rollingstone holiday park is the perfect spot for you – Chill by the resort style pool while the kids enjoy the waterslide or hang out at the on-site café with a delicious cocktail in hand.

ROWES BAY

📍 46 Heatleys Parade, Belgian Gardens, QLD, Australia
 📞 1800 751 845
 ✉️ rowesbay@tasmanholidayparks.com

Your tropical adventure begins at Rowes Bay. Set on the Townsville beachfront, just minutes from the CBD, Tasman Holiday Parks – Rowes Bay offers a perfect balance of nature and city convenience. Stay in one of our ocean view villas with views of Magnetic Island, a studio or cabin,

park the van or pitch a tent. Powered and unpowered sites are also available in shady tropical surrounds. Our holiday park is perfectly positioned near the city centre and popular 'The Strand' with plenty of shops, restaurants and entertainment at your fingertips.

PARK FACILITIES



📱 SCAN ME



PARK FACILITIES



📱 SCAN ME





SOUTH MISSION BEACH

📍 122-132 Kennedy Esplanade, South Mission Beach, QLD, Australia

☎ 07 4068 8129

✉ southmissionbeach@tasmanholidayparks.com

TORQUAY PALMS

📍 67 Truro Street, Torquay QLD, Australia

☎ 07 4125 1704

✉ torquaypalms@tasmanholidayparks.com

Where the rainforest meets the reef.

At Tasman Holiday Parks – South Mission Beach, enjoy 14 kilometres of white sandy beaches backing onto World Heritage-listed tropical rainforest where cassowaries roam.

Located just two hours from Cairns, on the Cassowary Coast, South Mission is a world of its own. Swim in beautiful waters under the coconut palms that stretch out into the ocean. Your holiday

starts at the park, with a games room, a school holiday program, a playground for the little ones and a tennis and basketball half court for all to enjoy. After a hard day of sightseeing, relax by the pool, chill out in the TV room and order takeaway from the on-site café.

Escape the southern winter months or holiday all year round. Hire a villa or cabin, park the van or pitch a tent. Life doesn't get any better!

Boutique holiday park just 300 metres from stunning Torquay Beach.

Amazing ecotourism adventures and breathtaking bucket list experiences await you at Hervey Bay.

Tasman Holiday Parks - Torquay Palms is the perfect base for exploring the region.

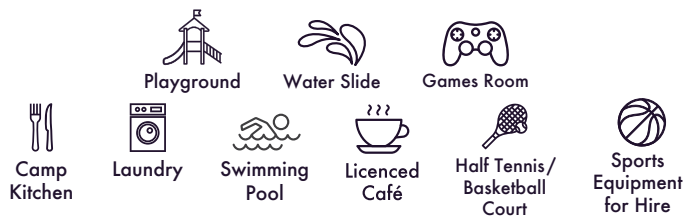
Our holiday park is in a prime location just 300 metres from stunning Torquay Beach and Charlton Esplanade. Swim, surf, or fish while taking in panoramic coastal views.

Browse shops, cafes, restaurants, parklands and popular tourist attractions all within walking distance from our holiday park.

PARK FACILITIES



📱 SCAN ME



PARK FACILITIES



📱 SCAN ME

Explore

VICTORIA

Cosmopolitan one minute, wild the next!
There's a holiday to suit everyone, whether it's
surfing or an opera break, art or fine dining, clifftop walks
or wine tasting, whale watching or people watching.

FOOD & WINE TRAIL

Calling all foodies and wine connoisseurs. If you're travelling through the Murray Region, then these are the must-do food and wine stops along the way.

📍 GEELONG

Start your trip in Geelong with a visit to the Jack Rabbit Vineyard in Bellarine, a stunning winery with breathtaking views of Port Phillip Bay. Their restaurant, The House of Jack Rabbit, also offers an exquisite menu with wine tasting options. After a luscious experience, amble on to **Tasman Holiday Parks – Geelong** where you will find all that you need for a comfortable and relaxing stay in Geelong.

📍 WARRNAMBOOL

Wander your way west along the Great Ocean Road to **Tasman Holiday Parks - Warrnambool** where you can unwind in style. Sample the award-winning Riesling at Basalt Winery, just minutes from our holiday park. While you're there, why not stay for lunch and immerse yourself in the farm experience with the resident babydoll sheep, ducks and chickens roaming the picturesque grounds.



📍 BENDIGO

Head north east to Balgownie Estate Winery, located just outside of Bendigo, for a taste of their award-winning Shiraz. Enjoy a restful night or two at **Tasman Holiday Parks – Bendigo** before making your way to Echuca for a wine tasting at Morrisons Riverview Winery. Offering a gorgeous setting overlooking the Murray River, this is a definite must-do along your journey.

📍 RUTHERGLEN

With over 20 wineries in the region, Rutherglen is sure to be your next destination. Conveniently located close by, **Tasman Holiday Parks - Lake Mulwala** is the perfect base to try all that the region has to offer. If you're wondering where to begin, we'd recommend sampling the fortified wines at the All Saints Estate or the Shiraz at Stanton & Killeen Wines.

📍 BRIGHT

Discover heaven on earth at the Milawa Cheese Factory! Indulge in the locally made cheese and then continue through to Beechworth where you can find the most delicious homemade pies at Beechworth Bakery.

Finally, make your way to Bright. Check in at **Tasman Holiday Parks – Bright** or **Tasman Holiday Parks - South Bright** and explore what this charming town has to offer. Enjoy the spectacular views as you sample the wines and settle into a state of absolute bliss in the stunning Alpine region.





BENDIGO

📍 15 Heinz Street, White Hills, VIC, Australia

📞 03 5448 4421

✉️ bendigo@tasmanholidayparks.com

Located just 90 minutes north of Melbourne, Bendigo is the perfect base for a leisurely weekend away or a fun-packed family holiday.

Tasman Holiday Parks – Bendigo is located 4.5km from the city centre and close to many favourite tourist spots. Be drawn into the excitement of the gold rush era and admire the heritage architecture. Sample delectable local produce and beverages the

town has to offer or put the car keys away and take advantage of the many activities on offer for everyone at our holiday park from indoor and outdoor playgrounds, a jumping pillow, go karts, mini golf, basketball and more – It'd be sure to keep everyone busy.

PARK FACILITIES

-  Pool Table
-  Remote Working Space
-  Basketball Court
-  Mini Golf
-  Heated Pool
-  Playground & Indoor Playground
-  Games Room
-  BBQ
-  Jumping Pillow
-  Camp Kitchen
-  Function Room
-  Table Tennis
-  Laundry
-  Pump Track
-  Heated Spa
-  Fire Pit
-  Sports Equipment for Hire
-  Gym
-  Pedal Karts
-  Giant Chess Set



📱 SCAN ME



BRIGHT

📍 1 Mountbatten Ave, Bright, VIC, Australia

☎ 03 5755 1064

✉ bright@tasmanholidayparks.com

The best alpine hospitality you will find at Bright! Tasman Holiday Parks – Bright is an easy walk to the town centre. The gorgeous town has it all – from outstanding winter sports, mountain biking, great food and wine and a ton of kid-friendly activities. Just three hours’ drive from Melbourne, and seven hours from Sydney, Bright shines brightly every day of the year. Brilliant autumn leaves, sensational winter skiing, alpine wildflowers in spring, and

pristine water holes for hot summer days, Bright truly has it all. Enjoy relaxation and privacy in beautifully landscaped gardens, with ultra-modern facilities on hand to keep you comfortable throughout your stay. Whether you’re rolling into a powered site or kicking back in a deluxe cabin or townhouse, you will receive the warmest welcome from our team on the ground.

SOUTH BRIGHT

📍 7-15 Churchill Avenue, Bright, VIC, Australia

☎ 03 5755 1010

✉ southbright@tasmanholidayparks.com

Bright and beautiful, every day of the year! Just over three hours’ drive from Melbourne, and seven hours from Sydney, Tasman Holiday Parks – South Bright offers plenty for all. Relax in one of our pools, drink in the scenic beauty of the mountains. And don’t worry about the kids... they can swim, bounce, play or kick back at our Games and TV Room.

Some of Victoria’s best seasonal skiing lies beyond our holiday park. Bright is picture-perfect in every season, the small and vibrant resort town brims with outdoor pursuits, bustling markets, boutique stores, quality wines and the tastiest food. So, what are you waiting for? Your next mountain escape is awaiting.

PARK FACILITIES



📱 SCAN ME

-
-
-
-
-
-
-
-

PARK FACILITIES

-
-
-
-
-
-
-
-
-
-



📱 SCAN ME



GEELONG

📍 75 Barrabool Road, Belmont, VIC, Australia
 📞 03 5243 5505
 ✉️ geelong@tasmanholidayparks.com

Where the river meets the sea at Geelong.

Located close to everything Geelong has to offer, Tasman Holiday Parks – Geelong is located amongst beautiful gum trees near the banks of the Barwon River making it the perfect weekend escape or family holiday.

Just over an hour from Melbourne, and minutes from the heart of Geelong, it's a great base to explore the Surf Coast and Bellarine Peninsula, and the cosmopolitan charms of Victoria's second largest city.

Spend your days surfing, swimming, fishing, walking and exploring and return to the park to chill by the pool or wind down in the games room.

Meals are also made easy with a camp kitchen, BBQs and sheltered outdoor dining areas. Why not picnic on the riverbank or take a short drive to the Geelong waterfront for a great selection of amazing restaurants, bars and cafes. The choices are endless in Geelong!

PARK FACILITIES



📱 SCAN ME

- Jumping Pillow
- Baby Bath
- BBQ
- Laundry
- Swimming Pool
- Playground
- Dump Point
- Camp Kitchen
- Pet Friendly
- Games Room

WARRNAMBOOL

📍 33 Lava Street, Warrnambool, VIC, Australia
 📞 03 5561 1233
 ✉️ warrnambool@tasmanholidayparks.com

Warrnambool...It's the perfect place for a perfect holiday! Tasman Holiday Parks – Warrnambool is your ideal base for exploring all this spectacular region has to offer. A three-hour drive direct from Melbourne brings you to our door or take the scenic route – the world-famous Great Ocean Road!

If your perfect holiday consists of ocean swimming, snorkelling, beachcombing or whale watching, then look no further than Warrnambool. One of the world's great road

trips, the Great Ocean Road stretches 240km from Torquay almost to Warrnambool. Marvel at spectacular views of the rugged coastline, including the famous Twelve Apostles.

Our holiday park is a 10-minute walk from the city centre with a top selection of cafes, restaurants and bars. Or, if you're chasing relaxation, wind down in our holiday park complete with a heated indoor swimming pool and plenty of facilities for you to enjoy.

PARK FACILITIES

- Playground
- Camp Kitchen
- TV & Games Room
- Table Tennis
- Laundry
- BBQ
- Infrared Sauna
- Pedal Kart
- Tennis Court
- Indoor Heated Swimming Pool



📱 SCAN ME

Explore

TASMANIA

Where better than Tasmania to explore the absolute best of city and wilderness.

From outstanding food and wine to unique heritage and wildlife, the island has it all.





ST HELENS

📍 18-20 St Helens Point Road, St Helens, TAS, Australia

☎ 03 6376 2332

✉ sthelens@tasmanholidayparks.com

Everything great about the seaside,
all within 50 steps.

Stay at Tasman Holiday Parks – St Helens and enjoy spectacular seaside views. With the breathtaking Bay of Fires on your doorstep, you are perfectly placed to explore the spectacular north-east coast of Tasmania.

You only have to step outside your cabin or caravan to appreciate sensational views every single day. The town of St Helens boasts some

of the best game fishing in Australia and if you enjoy mountain biking, there are world-class mountain bike trails for you to explore.

From our park's enviable position overlooking Georges Bay, our Bay of Fires holiday park meets your needs for thrills, relaxation and seaside fun. We have everything onsite to make your stay complete.

PARK FACILITIES



SCAN ME

Explore

WESTERN AUSTRALIA

Welcome to the spectacular world of Western Australia. With its vibrant beaches, vast landscapes, wildlife, heritage and cuisine, prepare for something truly special.

From picturesque Serpentine Falls to the rugged beauty of Yallingup Beach, beauty abounds.

From the heritage of Albany on the south-west coast, to the magnificent food and wine of the Margaret River region, you're sure to find your bliss!



SOUTH OF PERTH

Watch the city fade away in your rearview mirror as you hit the road ready to explore the best of what WA has on offer. If you're looking for a scenic and adventurous road trip in Western Australia, look no further than the journey from Perth to Yallingup. There are phenomenal sightseeing opportunities and must-do activities along the way. We'll let you in on our favourite stops through the stunning South-West region of WA.



ALBANY



HEADING SOUTH TO ALBANY

The first leg of this road trip takes you from Perth to Albany, a charming coastal town with a rich history. The drive itself is a treat, with plenty of stunning coastal views and charming small towns to explore along the way. Upon arriving in Albany, one of the must-visit attractions is the Historic Whaling Station. This interactive museum takes you back in time to the 1800s, when Albany was the centre of the whaling industry in Australia. It's a fascinating look at a

piece of Australia's history that is often overlooked. Another must-visit in Albany is the National Anzac Centre. This museum pays tribute to the Australian and New Zealand Army Corps (ANZACs) who fought in World War I. The centre is located on the grounds of the Albany Heritage Park, which also includes hiking trails, gardens, and picnic areas. Of course, when in Albany you certainly need to factor in some downtime at the beautiful beaches. Stay at Tasman Holiday Parks - Albany and wander to the golden shores at your leisure for some relaxing downtime along your journey. Book a site and make use of the immaculate facilities.

CHASING WATERFALLS IN SERPENTINE

After soaking up the history and culture of Albany, it's time to head inland to Serpentine Falls. This natural wonder is located in Serpentine National Park and is a popular spot for swimming, hiking, and picnicking. The falls themselves are a stunning sight, with crystal clear water cascading down a series of rock pools. There are plenty of walking trails in the area, ranging from easy strolls to more

challenging hikes, and there are plenty of picnic areas and BBQs to enjoy a meal. One of the most popular trails in the park is the Kitty's Gorge Trail, which takes you through the heart of the Serpentine River Valley. The trail is just over 16km round trip and takes you past some of the most picturesque scenery in the park. After a day at the falls, head home to Tasman Holiday Parks - Serpentine Falls and enjoy relaxation at its best. Spend quality time with the ones you care about, create some amazing memories, meet new friends in the park and you can even bring your pooch along with you!

📍 SIPPING WINE IN YALLINGUP

The final destination on this road trip is the charming town of Yallingup, located in the heart of the Margaret River wine region. This region is known for producing some of the best wines in Australia, and Yallingup is no exception. One of the must-visit wineries in Yallingup is the Wills Domain Winery. This family-owned winery produces a wide range of award-winning wines, and their on-site restaurant is one of the best in the region.



Another popular winery in the area is the Arimia Estate. This winery is known for its biodynamic farming practices and sustainable winemaking methods. The tasting room is open seven days a week, and the outdoor seating area is the perfect spot to enjoy a glass of wine and soak up the views. After a glorious day of wine-tasting, settle in

at Tasman's Yallingup holiday parks. You have the option of our Yallingup Caves or Yallingup Beach holiday parks (or spend a few nights at both!).

You are sure to find everything you need to feel relaxed, rested and recharged after your road trip! The trip from Perth to Yallingup is a serene yet thrilling adventure that takes you through some of the most beautiful parts of southern WA.

The best part of Ledge Point is the endless opportunities to immerse yourself in the exquisite natural surroundings. Stay a few nights at our Ledge Point holiday park and explore all Ledge Point has to offer. Soak up the serenity of a peaceful walk amongst the wildflowers to the Nilgen Lookout or along the beach whilst enjoying the panoramic views. Grab a rod and hang out at "the groyne" - a favourite Ledge Point fishing haunt. BYO boat to launch from the beach or join a charter to some of the best fishing spots.



📍 RIVERBENDS AND RIDGES OF KALBARRI

The journey continues as you reach the spectacular terrains of Kalbarri, where ancient river gorges meet the wildflower-strewn coastline. Stand atop the Kalbarri Skywalk, with its panoramic vistas that stretch over the Murchison River, and feel the grandeur of nature envelop you. The region's natural bounty extends from the dramatic inland gorges to the sparkling ocean, offering activities from heart-pumping hikes to serene sunset cruises. Within walking distance of local amenities and with vistas that frame the river's journey to the Indian Ocean, Tasman Holiday Parks - Kalbarri is your perfect base to unlock the wonders

of the Coral Coast. Kalbarri is a place where every turn offers a postcard-worthy scene, perfect for adding to your collection of cherished travel memories.



📍 NORTH OF PERTH

Bid the bustle of Perth goodbye as you steer northward, embarking on an epic voyage to the untamed beauty of Western Australia's northern reaches. From the quaint charm of Ledge Point to the rugged landscapes of Kalbarri and the pristine waters of Denham,

each destination promises its own unique blend of excitement and serenity. Embrace the vast, open roads that guide you to breathtaking vistas and exhilarating experiences. We're excited to share with you the treasured locales and hidden gems that punctuate the majestic coastline and the red-earthed hinterland of WA's North.

📍 EXPLORING DENHAM AND THE SHARK BAY AREA

After immersing yourself in the rugged beauty of Kalbarri, it's time to head further north to the town of Denham, located in the heart of the Shark Bay World Heritage Area. This area is known for its abundance of marine life and natural beauty. Book in at Tasman Holiday Parks - Denham Seaside and stay a few days to gain the full Denham experience.

exhibits and displays that explore the history and biodiversity of the Shark Bay area.

The road trip from Perth to Denham via Ledge Point is a scenic and exciting adventure that takes you through some of the most beautiful parts of Western Australia and with all the activities along the way, you'll discover there is something for everyone on this trip. So, pack your bags, hit the road, and get ready to explore the Coral Coast region of WA like never before

One of the top attractions in Denham is the stunning Shell Beach, a unique beach made entirely of tiny white shells. The beach stretches for miles and is a popular spot for swimming, snorkelling, and sunbathing. Another must-visit in Denham is the Monkey Mia Dolphin Resort, where you can get up close and personal with wild bottlenose dolphins. The resort offers daily feeding sessions, as well as a range of water sports and other activities. If you're interested in learning more about the history and culture of the area, be sure to visit the Shark Bay World Heritage Discovery Centre. This museum offers interactive



📍 COASTAL CHARM IN LEDGE POINT

The first leg of this trip takes you from Perth to Ledge Point, a small coastal town located just an hour and a half north of the city. Upon arriving, we suggest making your way to one of the most dramatic sceneries: The Lancelin Sand Dunes. These magnificent sand dunes are perfect for sandboarding, quad biking, and 4WD adventures, or take to the air and experience a new perspective of this natural wonder on a scenic flight over the dunes.





ALBANY

📍 22 Wellington Street, Centennial Park, WA, Australia
 ☎ 08 9841 4616
 ✉ albany@tasmanholidayparks.com

Albany...the jewel of southern WA.

The vibrant port town of Albany, in WA's spectacular Great Southern Region, has everything you need for a fun and relaxing family holiday.

Tasman Holiday Parks – Albany is a five-hour drive from Perth and is located right next door to Albany's showgrounds and sporting facilities. There's so much for you to see and do in Albany.

If relaxing is more your style, why not swim and take it easy in our holiday park which includes ten beautifully shaded acres for you to wind down. Be immersed and surrounded by the best that WA has to offer at our Albany holiday park.

PARK FACILITIES

-  Swimming Pool
-  Camp Kitchen
-  Jumping Pillow
-  Recreation Room
-  Play Park
-  Laundry
-  Pizza Oven
-  Mini Tennis / Basketball Court
-  BBQ
-  Playground
-  Pet Friendly



📱 SCAN ME



DENHAM SEASIDE

📍 Stella Rowley Drive, Denham, WA, Australia
 📞 08 9948 1242
 ✉️ denham@tasmanholidayparks.com

Unwind with nature on your doorstep at Denham. Unlock the secrets of Shark Bay and discover for yourself why this Western Australian coastal gem is a designated World Heritage site.

Less than 30 kilometres from the Monkey Mia dolphins, our pitch-perfect holiday park offers beautiful beaches, crystal clear waters and stunning views.

There's something for every member of the family, with a wealth of activities on hand. Try water sports,

photography, swimming, fishing, kitesurfing, or just laze on the beach and forget your cares.

The vibrant seaside town of Denham is on the doorstep, with a selection of appealing eateries, a popular bakery and the Shark Bay Hotel perched on the foreshore.

Choose from a range of camping and chalet options to suit your needs and budget, then kick back and relax. Can't wait to meet you!

PARK FACILITIES



📱 SCAN ME

- Fish Cleaning Facilities
- Direct Beach Access
- Pet Friendly
- Laundry
- Swimming Pool
- Camp Kitchen
- Playground
- Jumping Pillow
- Recreation Room
- BBQ
- Mini Tennis / Basketball Court

KALBARRI

📍 92 Grey Steet, Kalbarri, WA Australia
 📞 08 9937 1005
 ✉️ kalbarri@tasmanholidayparks.com

A window to the wonders of nature. Immerse yourself in the rugged beauty of the Kalbarri region, known as the jewel of the Coral Coast. Tasman Holiday Parks - Kalbarri is the ideal base for your adventures. Our waterfront location provides stunning views over the Murchison River to the Indian Ocean. The most centrally located holiday park Kalbarri offers, Tasman Holiday Parks is within easy walking distance to shops, dining venues, tourist information and services.

The favourable Mediterranean climate enables year-round enjoyment of a host of water-based activities, including swimming, snorkelling, boating and fishing. Go dolphin or whale watching, feed the pelicans, enjoy local brews and seafood.

Our holiday park offers various accommodation types to meet all needs and budgets, so start planning your adventure now! We know you'll love it!

PARK FACILITIES

- Laundry
- Camp Kitchen
- BBQ
- Playground
- Fish Cleaning Area



📱 SCAN ME



LEDGE POINT

📍 742 Ledge Point Road, Ledge Point, WA, Australia

☎ 08 9655 2870

✉ ledgepoint@tasmanholidayparks.com

Coastal playgrounds, extraordinary desert landscapes at Ledge Point.

Enjoy the breathtaking ocean and relaxed holiday vibe of this charming coastal town.

An easy 100km drive from Perth, Tasman Holiday Parks – Ledge Point is the perfect base for a leisurely family holiday, a weekend escape or a stopover on your Western Australian trek.

Outstanding beaches, waves and surfing conditions are ideal for water-based activities for all ages.

Spend your days indulging in swimming, boating and water sports. Unwind by snoozing on the sand or ambling along the shore at sunset.

Follow the Indian Ocean Drive to uncover nature's treasures at Lancelin, Cervantes Beach and the Turquoise Coast. There's something for everyone, from sandboarding massive dunes to exploring the impressive Pinnacles Desert.

Come home to our Ledge Point holiday park, where you can choose from quality cabins and camping options to suit your budget.

SERPENTINE FALLS

📍 2489 South Western Highway, Serpentine, WA, Australia

☎ 08 9525 2528

✉ serpentinefalls@tasmanholidayparks.com

Escape to a natural paradise, on Perth's doorstep at our Serpentine Falls holiday park.

Stay and play in our stunning natural playground, only 50 minutes from Perth and a world away from cares.

In the heart of the captivating Darling Ranges, Tasman Holiday Parks - Serpentine Falls offers a warm welcome, flexible accommodation and a wealth of attractions for travellers in search of escape.

With the famous Serpentine Falls, renowned Millbrook Winery and historic Jarrahdale at arm's reach, you can kick back and explore at your own pace.

Whether you want a site for your caravan or a spacious luxe cabin, our versatile accommodation delivers.

PARK FACILITIES



📱 SCAN ME



Lending Library



Baby Bath



Pedal Kart



BBQ



Recreation Room



Camp Kitchen



Swimming Pool



Jumping Pillow



Laundry



Board Games



Playground



Boat Parking

PARK FACILITIES



Laundry



BBQ



Swimming Pool



Bike & Scooter Trails



Indoor Camp Kitchen



📱 SCAN ME



YALLINGUP BEACH

📍 186 Yallingup Beach Road, Yallingup, WA, Australia
 📞 08 9755 2164
 ✉ yallingupbeach@tasmanholidayparks.com

Paradise on the Indian Ocean at Yallingup Beach.

Perfectly situated for exploring the south-western coast of Australia, Tasman Holiday Parks – Yallingup Beach is a world apart.

Our holiday park is perfectly positioned to make the most of beautiful Yallingup Beach. Test yourself on the big waves rolling in at the beach or enjoy a lazy swim in the tranquil lagoon.

Whether it's a family weekend or a longer stop, this is a place to unwind where you'll discover grassy

green pockets nestled among ancient banksia trees, perfect for parking the motorhome or setting up a tent.

In the morning the adventure begins anew. Cross the road for crisp white sands and the azure ocean. Catch a wave, catch a fish or just chill by the lagoon.

So, sit back and watch the western sun set on the Indian Ocean at our holiday park.

YALLINGUP CAVES

📍 23 Yallingup Beach Road, Yallingup, WA, Australia
 📞 08 9755 2196
 ✉ yallingupcaves@tasmanholidayparks.com

Your adventure starts right here at Tasman Holiday Parks – Yallingup Caves.

Nestled alongside the Leeuwin-Naturaliste National Park, you're surrounded by nature and some of the best scenery around.

Enjoy sunsets over the beach and the sights and sounds of the bush, with the bonus of good coffee and the iconic Caves House Hotel just across the road!

Explore the walking trails around the park, swim in the lagoon, surf spectacular breaks and throw in a line.

Or take it easy and relax...enjoy a bottle of the local wine and a grazing platter in our green and grassy park while you watch the sun set.

PARK FACILITIES



📱 SCAN ME



PARK FACILITIES



📱 SCAN ME

Explore

NEW ZEALAND NORTH ISLAND

Swim, surf and kayak in pristine Pacific waters then head inland for beautiful river walks and swimming spots set in bush-clad hills.

The spectacular scenery of the North Island is not to be missed!



ROAD TRIP FROM AUCKLAND TO TE ANAU

New Zealand is known for its stunning natural beauty, and the best way to experience it is by taking a road trip across the country. From the white sandy beaches of the North Island to the majestic mountains of the South Island, this road trip is the ultimate adventure for any wanderluster!

BAY OF PLENTY – GATEWAY TO THE BEACHES

Starting from Auckland, make a delightful detour to Miranda, an enchanting stopover on your journey to the Bay of Plenty. Here, our holiday park awaits with its natural hot mineral pool, promising a unique and rejuvenating experience amidst your travels. Immerse yourself in the warm waters before continuing your adventure.

The Bay of Plenty region is home to some of the country's most beautiful beaches, including Waihi Beach, Papamoa Beach and Ohiwa Beach.

Waihi Beach is known for breathtaking views of the 9km stretch of pristine white sand which is right on your doorstep when staying at our Waihi Beach or Beachaven holiday parks! Papamoa Beach is a popular destination for surfers and beachgoers alike. Stay at our Papamoa Beach Holiday Park and wake up to the sound and view of the ocean each morning. This is also a great holiday base if you're looking to explore Tauranga and The Mount.

COASTAL SERENITY AT OHIWA BEACH

Continue east along the coast and find yourself in the serene surroundings of Ohiwa Beach. This hidden gem offers stunning views and a peaceful atmosphere, making it the perfect place to unwind and take in the natural beauty of New Zealand. At our Ohiwa Beach holiday park you can experience paddleboarding, fishing, surfing and an abundance of nature and beach walks, providing plenty of sightseeing opportunities and an ideal way to truly immerse yourself in this little paradise.



EXPLORING ROTORUA'S GEOTHERMAL WONDERS

Direct your road trip south to a must-visit in the North Island: Rotorua, a city known for its geothermal activity and rich Māori culture. Take a dip in one of the many hot springs, visit the Wai-O-Tapu Thermal Wonderland to see the famous Champagne Pool, or experience a traditional Māori cultural performance.

TAUPO – A LAKEFRONT HAVEN

After Rotorua, take a scenic drive to Taupo, a beautiful lakefront town located on the North Island. Taupo is known for its stunning lake and surrounding mountains, making it an ideal destination for hiking, fishing, and water sports. Make sure to visit the Huka Falls, a breathtaking waterfall located just a short drive from the town center.

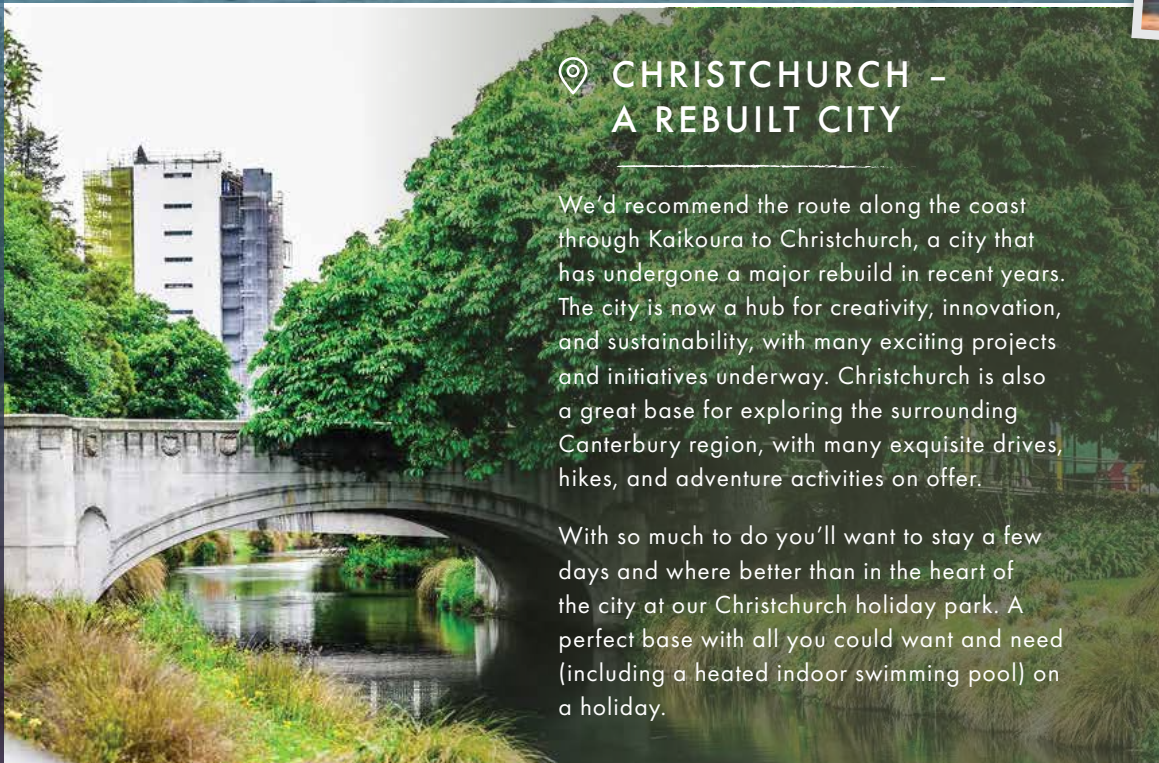




📍 PICTURE PERFECT PICTON

After exploring the North Island, it's time to hop on the inter-islander ferry from Wellington to Picton, located in the Marlborough region of the South Island. The 3-hour ferry ride offers stunning views of the Cook Strait and Marlborough Sounds, making it a highlight of the road trip. Plus, you can receive 15% off your Interislander fare when you book to stay at any of our New Zealand Tasman Holiday Parks. Visit our website for more details.

Be sure to stay a while in Picton to explore this quaint town. Take a leisurely stroll around town, walk the Queen Charlotte Track or hire a bike and take your pick of some great trails suitable for everyone from beginners to pros. When you stay at Tasman Holiday Parks – Picton the world famous Marlborough Sounds are at your doorstep with 1,500 kilometres of spectacular coastline. Cruise the sounds, take a wildlife tour, swim with dolphins, or watch for whales as you take in all this gorgeous town has on offer!



📍 CHRISTCHURCH – A REBUILT CITY

We'd recommend the route along the coast through Kaikoura to Christchurch, a city that has undergone a major rebuild in recent years. The city is now a hub for creativity, innovation, and sustainability, with many exciting projects and initiatives underway. Christchurch is also a great base for exploring the surrounding Canterbury region, with many exquisite drives, hikes, and adventure activities on offer.

With so much to do you'll want to stay a few days and where better than in the heart of the city at our Christchurch holiday park. A perfect base with all you could want and need (including a heated indoor swimming pool) on a holiday.

📍 A SCENIC STOPOVER IN TEKAPO

If you are making your way down south to Te Anau then Lake Tekapo and Queenstown are two absolute must-visits along your way. A tranquil alpine lake that offers breathtaking views of the Southern Alps. The town is a popular stopover, and it's also a great place to stargaze, with some of the clearest skies in the country.



📍 ADVENTURE CAPITAL OF NEW ZEALAND - QUEENSTOWN

From Lake Tekapo, make your way to Queenstown, the adventure capital of New Zealand. Queenstown is known for its stunning scenery, adrenaline-fueled activities, and vibrant nightlife. Take a bungee jump, go skiing or snowboarding, or simply enjoy the stunning views of the surrounding mountains and lakes.

in advance though as this is one of our most popular holiday parks!

The road trip from Auckland to Te Anau is the ultimate escapade for any adventurer. From the white sandy beaches of the North Island to the majestic mountains of the South Island, this journey takes you through some of the most beautiful parts of New Zealand.

📍 MAJESTIC SCENERY IN TE ANAU

The road trip ends in Te Anau, a small town located in the heart of Fiordland National Park. This region is known for its stunning scenery, including the famous Milford Sound and Doubtful Sound. Take a boat tour to see these majestic natural wonders up close or go on a hiking adventure through the park's many trails.

Take in the beauty of Lake Te Anau whilst staying at our Te Anau holiday park. Visit the local cafés and restaurants, take a boat trip out on the lake or simply relax and unwind in this serene destination. Be sure to book your stay





BEACHAVEN

📍 21 Leo Street, Waihi Beach, New Zealand
 📞 0800 863 550
 ✉ beachaven@tasmanholidayparks.com

Tasman Holiday Parks – Beachaven is a friendly holiday park set on four acres right by Waihi Beach. Explore the 9km long stretch of white sands, stunning views, great surf and fishing.

Located just off SH2 between Coromandel and Tauranga, Tasman Holiday Park – Beachaven is perfectly situated to explore the myriad of attractions of the Coromandel Peninsula and the Bay of Plenty.

When you're ready for action, put on your hiking shoes or bike helmet and hit the fabulous walking and cycling trails, with stops along the way at heritage parks, swimming spots and cafes serving scrumptious local produce.

Need a bit of retail therapy? The Waihi township offers fashion, homewares, unique crafts and local gourmet food and wine.

OHIWA BEACH

📍 380 Ohiwa Harbour Road, Kutarere, New Zealand
 📞 07 315 4741
 ✉ ohiwabeach@tasmanholidayparks.com

Set on five landscaped hectares beside the sparkling Pacific Ocean and a sheltered harbour, our Ohiwa Beach holiday park offers the best of sea and bush.

Our park is ideally situated with easy access to the towns and beaches of the eastern Bay of Plenty, and one of the great New Zealand road trips around the East Cape.

You don't have to travel far for all the fun – Located just a few steps from our park, lies the magnificent Ohiwa Beach where you can surf, swim, fish, walk or read a book beneath a pohutukawa tree.

Hire a kayak or paddleboard from reception and explore Ohiwa Harbour, or enjoy a walk in the coastal nature reserve adjoining the park.

PARK FACILITIES



📱 SCAN ME



PARK FACILITIES



📱 SCAN ME



PAPAMOOA BEACH

📍 535 Papamoa Beach Road, Papamoa Beach, New Zealand

📞 07 572 0816

✉ papamoabeach@tasmanholidayparks.com

Holiday right on the sands of Papamoa Beach at Tasman Holiday Parks.

Papamoa Beach is a true gem in the beautiful Bay of Plenty. This laid-back coastal settlement is famous for gorgeous scenery, great surf, and glorious sunsets.

Located just steps from some of the best surf in the country, Tasman Holiday Parks – Papamoa Beach is a resort-style coastal haven. Stay for a weekend or

a long, lazy holiday. The park is the perfect base for unwinding or getting your adrenaline pumping.

There's hiking and cycling trails, waves to ride, fish to catch, land yachts to sail and even dolphin encounters. Or watch the sun rise over the Pacific Ocean, relax in the spa, explore the local markets, cafes and shops. It's all on your doorstep!

PARK FACILITIES

-  Playground
-  Pet Friendly
-  Spa Pool
-  BBQ
-  Camp Kitchen
-  Pizza Oven
-  Laundry
-  Boat Wash Area
-  Fish Cleaning Facilities
-  Kids Zone
-  Resort Style Swimming Pool
-  Giant Chess Set



📱 SCAN ME



MIRANDA

📍 595 Front Miranda Road, Miranda, New Zealand

☎ 07 867 3205

✉ miranda@tasmanholidayparks.com

Whether you're looking for a relaxing haven or prefer to get out and explore, you'll find a host of activities on your doorstep. A great location, luxurious hot mineral pool, ample free activities for guests all year round... It's easy to see why our Miranda holiday park is a popular return destination for thousands of Kiwis and international visitors.

Situated at the gateway to the North Island's Coromandel Peninsula, the park is one-hour southeast of Auckland and 20 minutes from Thames.

Unwind in our fabulous on-site hot mineral pool. Test your skills on the flying fox or wander through the Enchanted Forest. Check out the BMX track, or walking and cycling trails. Go swimming or fishing at the nearby coast.

Our Miranda holiday park offers quality accommodation for most needs and budgets. Give us a call – we're looking forward to meeting you!

PARK FACILITIES



📱 SCAN ME

- Hot Mineral Pool & Children's Paddling Pool
- Camp Kitchen
- Laundry
- Playground
- Tennis Court
- Mini Golf
- TV Lounge
- Pizza Oven
- Pedal Kart
- BMX Track
- BBQ & Outdoor Dining
- Table Tennis
- Trampolines
- Bike & Walking Trails
- Park Shop

ROTORUA

📍 1495 Pukuatua Street, Rotorua, New Zealand

☎ 07 777 2997

✉ rotorua@tasmanholidayparks.com

Rotorua's fascinating volcanic craters, bubbling mud, shooting geysers and hot springs attract crowds of tourists from around the globe.

Tasman Holiday Parks - Rotorua provides the perfect base to explore the natural wonders of the region. Located just 1 km from the city centre, you'll have easy access to local shops, cafes, restaurants and tourist attractions.

Visit world-renowned geothermal reserves, volcanoes and geysers. Find your bliss soaking in a

mineral pool or bathing at a mud spa. Experience a Māori feast and learn about this ancient culture. Visit the movie set created for The Hobbit and The Lord of the Rings trilogies.

At the end of the day, enjoy the picturesque setting and friendly service at Tasman Holiday Parks - Rotorua. With accommodation options that suit all needs and budgets, from motel rooms and traditional cabins to camping sites, you'll find an accommodation type that suits you best.

PARK FACILITIES

- Pet Friendly
- BBQ
- Laundry
- Camp Kitchen
- Playground
- Swimming Pool
- Communal Lounges
- Jumping Pillow
- 38-40° Mineral Pools



📱 SCAN ME



WAIHI BEACH

📍 15 Beach Road, Waihi Beach, New Zealand

☎ 0800 924 448

✉ waihibeach@tasmanholidayparks.com

Your dream beachside holiday destination awaits at Tasman Holiday Parks – Waihi Beach.

Escape to sun-kissed shores and immerse yourself in endless adventure at our Waihi Beach holiday park.

Located by the Surf Life Saving Club, you can enjoy breathtaking views of the 9km stretch of pristine white sand on your doorstep. Whether you're a seasoned surfer or just looking to soak up

the sun, our location has everything to satisfy your thirst for adventure.

And when the day is done, retreat to the comfort of our park, complete with a 25m heated pool, gym, sauna, adventure playground, and a kids' hangout room with games, making it your ultimate holiday destination.

PARK FACILITIES

-  Fish Smoker
-  Laundry
-  Gym
-  Games Room
-  Beach Wheelchairs
-  Water Slide
-  Under 5's Play Room
-  Jumping Pillow
-  Outdoor Playground
-  Heated Swimming Pool & Spa
-  BBQ
-  Sauna
-  Trike Hire
-  Camp Kitchen
-  Fish Filleting Station
-  Giant Chess Set
-  Locked Storage



📱 SCAN ME

Explore

NEW ZEALAND SOUTH ISLAND

Discover the South Island...
whether you're an adrenaline junkie or a wildlife lover,
you'll find the perfect fit in New Zealand's South Island.



CHRISTCHURCH

📍 39 Meadow Street, Papanui, Christchurch, New Zealand

☎ 0800 396 323

✉ christchurch@tasmanholidayparks.com

Your Christchurch break made easy at Tasman Holiday Parks – Christchurch.

Located only 15 minutes from the Christchurch CBD and the airport, our holiday park is conveniently located for all travellers. Wind down in the pool as the kids make the most of the entertainment available at our holiday park.

If you'd like to explore beyond our holiday park, why not take in local cafes, shops and markets.

Depending on the season, bike, hike or ski in the stunning natural surrounds of Christchurch.

Whatever the reason for your visit, a warm welcome awaits in vibrant Christchurch.

Haere mai!

PARK FACILITIES



Arcade Room



Indoor Swimming Pool



Water Slide



TV Room



Jumping Pillow



Bike Repair Station



Pool Table



BBQ



Fully-Equipped Kitchen



Laundry



Secure Bike Storage



Mini Store



Heated Spa



Indoor & Outdoor Playground



Pedal Karts



SCAN ME



PICTON

📍 78 Waikawa Road, Picton, New Zealand
 📞 0800 277 444
 ✉️ picton@tasmanholidayparks.com

Gateway to the Marlborough Sounds. Located just ten minutes from the Picton town centre and across the road from the Picton Marina, Tasman Holiday Parks - Picton is ideally situated for exploring everything this remarkable area has to offer.

The Interislander ferry docks at Picton and it's a great base for cruises, kayaking, swimming, winery tours and day trips. Walk the Queen Charlotte Track

or hire a bike and take your pick of some great rides suitable for everyone from beginners to pros.

The world-famous Marlborough Sounds are at your doorstep with 1,500 kilometres of spectacular coastline. Cruise the sounds, take a wildlife tour, swim with dolphins, watch for whales, hire a kayak and explore at your leisure or join a guided kayak tour.

PARK FACILITIES



📱 SCAN ME

- Heated Swimming Pool & Children's Paddling Pool
- Camp Kitchen
- BBQ
- Games & TV Room
- Playground
- Trampolines
- Pedal Karts
- Outdoor Chess Set
- Laundry
- Pizza Oven
- Spa Pool For Hire
- Luggage Storage
- Bike Hire

TE ANAU

📍 128 Te Anau Terrace, Te Anau, New Zealand
 📞 0800 249 746
 ✉️ teanau@tasmanholidayparks.com

The gateway to Milford Sound. Explore the majestic Fiordland from Te Anau.

Tasman Holiday Parks – Te Anau is just steps away from Lake Te Anau, and a short walk from the supermarkets, restaurants and cinema in town.

Te Anau is a paradise for nature lovers and outdoor adventurers. It's the perfect base for exploring the

region, and some of the most breathtaking natural scenery you'll ever see!

Enjoy all the comforts of home with our well-equipped facilities. Slip into one of our hot tubs overlooking the spectacular lake when your day of adventure is complete.

PARK FACILITIES

- Playground
- Hot Tubs
- Sauna
- Camp Kitchen
- Outdoor Chess Set
- Laundry
- BBQ
- Luggage Storage
- Jumping Pillow
- Games Room
- Pet Friendly on Request



📱 SCAN ME



PET FRIENDLY PARKS



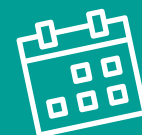
It's important that the whole family gets to go on a holiday... this includes our furry friends. Most of our holiday parks are pet friendly across Australia and New Zealand.



Whether your furry friend likes big grassy spaces, beachside getaways or the comforts of a cabin, there's an option to suit your needs. Each park is different so we recommend checking with the park directly prior to booking.



SCAN ME



IN-PARK ACTIVITIES

At **Tasman Holiday Parks**, we're all about creating moments that matter. Our in-park events calendar is specially curated to highlight our parks and the wonderful regions we're a part of.

Scan to view our parks' events





SCAN ME





Follow us on social and share your
#mytasmanmoment with us.

  @tasmanholidayparks

www.tasmanholidayparks.com



Let's stay in touch!

Sign up to our newsletter to receive the latest news, deals
and holiday inspiration across Australia and New Zealand.

